

SAFETY ON THIS JOB  
DEPENDS ON YOU

REVISIONS			
NO	SYM	ZONE	DATE

DIRECTION	DISTANCE	NORTHING	EASTING
N 60° 39' 03.1" E	600.076	968022.135	635506.968
N 60° 39' 03.1" E	579.997	968316.250	636030.024
N 60° 39' 03.1" E	619.966	968904.388	637075.971
N 60° 39' 03.1" E	599.988	969198.460	637598.950
N 60° 39' 03.1" E	599.988	969492.532	638121.928
N 60° 39' 03.1" E	599.988	969786.603	638644.907
N 60° 39' 03.1" E	210.257	969889.658	638828.177
N 60° 39' 03.1" E	389.731	970080.677	639167.886
N 60° 39' 03.1" E	599.988	970374.749	639690.865
N 60° 39' 03.1" E	599.988	970668.821	640213.843
N 60° 39' 03.1" E	589.988	970957.992	640728.106
N 60° 39' 03.1" E	609.987	971256.965	641259.801
N 60° 39' 03.1" E	561.225	971532.038	641748.993
N 60° 39' 03.1" E	638.750	971845.109	642305.759
N 60° 39' 03.1" E	599.988	972139.181	642828.737
N 60° 39' 03.1" E	599.988	972433.253	643351.716
N 60° 39' 03.1" E	599.988	972727.325	643874.695
N 60° 39' 03.1" E	599.988	973021.397	644397.674
N 60° 39' 03.1" E	599.988	973315.469	644920.653
N 60° 39' 03.1" E	599.988	973609.541	645443.631
N 60° 39' 03.1" E	599.988	973903.613	645966.610

**GENERAL NOTES**

**FABULATED DATA:**  
All Bearings, Distances, and Co-ordinate values given in the FABULATED LISTING are based on FLORIDA STATE PLANE COORDINATE DATA - EAST ZONE (Scale Factor 0.99997942)

**STATIONING** shown in the tables and elsewhere are based on data computed on FIELD MEASUREMENTS and are NOT SCALE CORRECTED.

**PLAN DATA:**  
Station values shown are based on computed field values for centerline of the R/W (as perpendiculars to centerline)

All distances shown on the Plan are FIELD MEASUREMENTS based on adjusted control traverses between NGS Triangulation Stations.

All bearings shown are GRID based on the NGS ties. Distances shown (####) are values obtained from available USCE R/W Maps and are not verified.

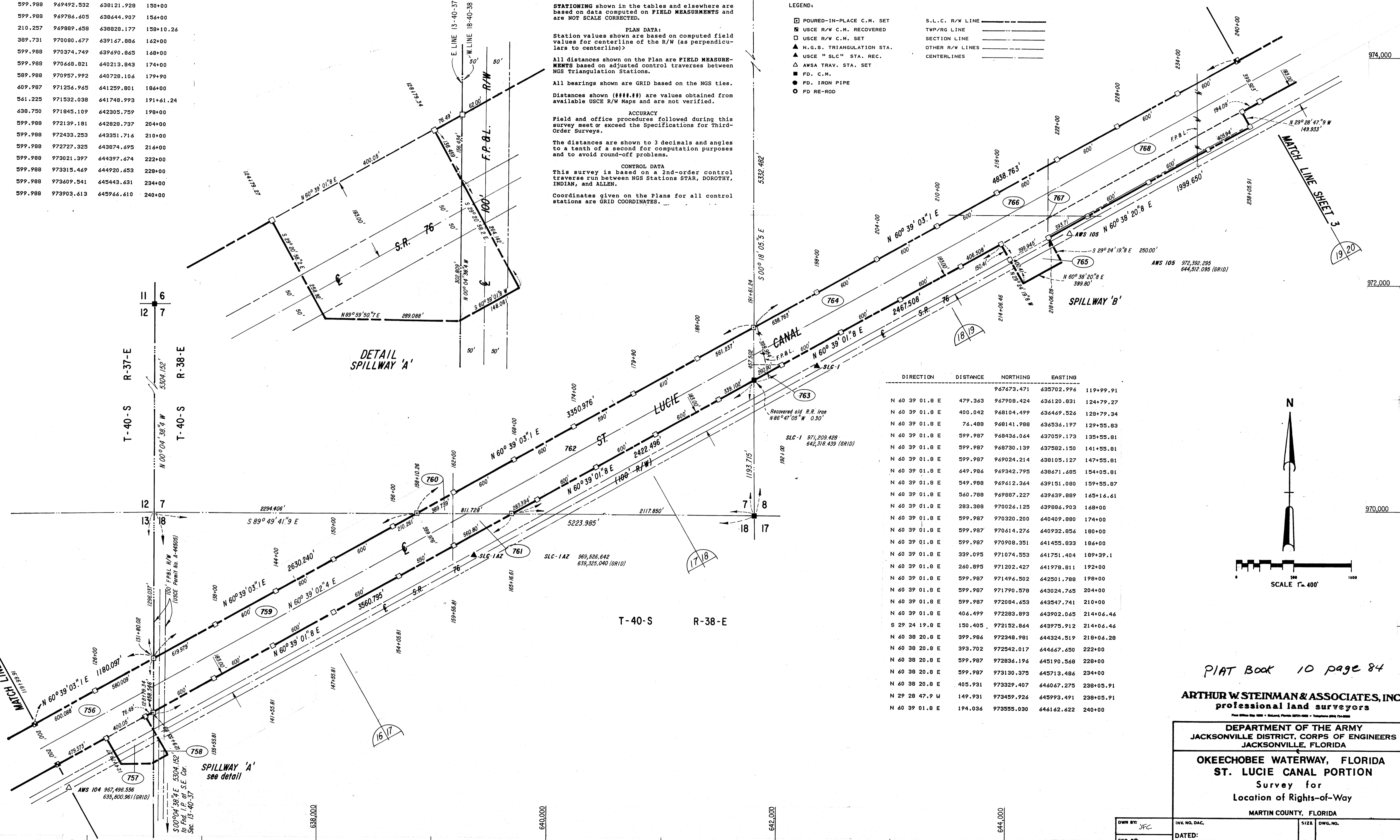
**ACCURACY**  
Field and office procedures followed during this survey meet or exceed the Specifications for Third-Order Surveys.

The distances are shown to 3 decimals and angles to a tenth of a second for computation purposes and to avoid round-off problems.

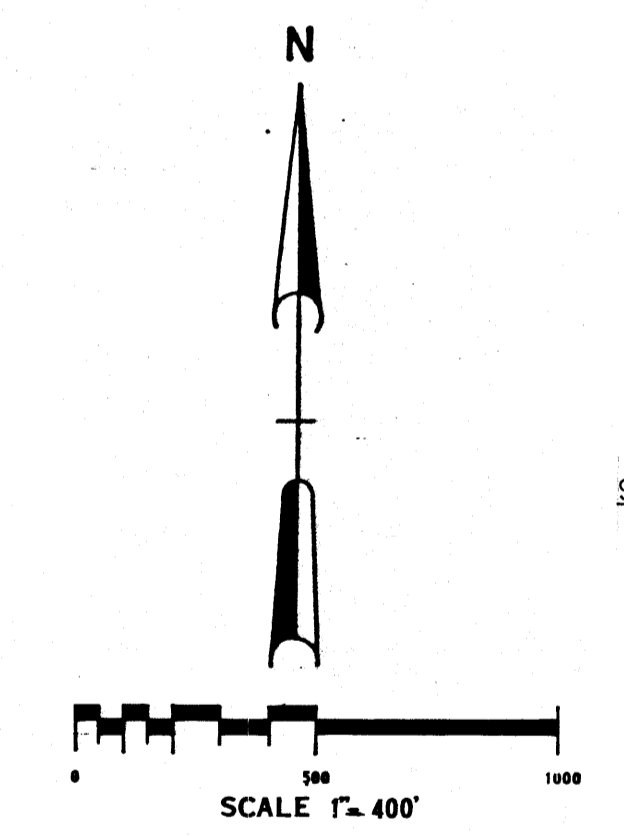
**CONTROL DATA**  
This survey is based on a 2nd-order control traverse run between NGS Stations STAR, DOROTHY, INDIAN, and ALLEN.

Coordinates given on the Plans for all control stations are GRID COORDINATES.

- LEGEND:**
- ☐ POURED-IN-PLACE C.M. SET
  - USCE R/W C.M. RECOVERED
  - USCE R/W C.M. SET
  - ▲ N.G.S. TRIANGULATION STA.
  - ▲ USCE "SLC" STA. REC.
  - ▲ AWSA TRAV. STA. SET
  - FD. C.M.
  - FD. IRON PIPE
  - FD. RE-ROD
- S.L.C. R/W LINE  
TWP/RG LINE  
SECTION LINE  
OTHER R/W LINES  
CENTERLINES



DIRECTION	DISTANCE	NORTHING	EASTING
N 60° 39' 01.8" E	479.363	967673.471	635702.996
N 60° 39' 01.8" E	400.042	968104.499	636120.831
N 60° 39' 01.8" E	76.488	968141.988	636536.197
N 60° 39' 01.8" E	599.987	968436.064	637059.173
N 60° 39' 01.8" E	599.987	968730.139	637582.150
N 60° 39' 01.8" E	599.987	969024.214	638105.127
N 60° 39' 01.8" E	649.986	969342.795	638671.685
N 60° 39' 01.8" E	549.988	969612.364	639151.080
N 60° 39' 01.8" E	560.788	969887.227	639639.889
N 60° 39' 01.8" E	283.388	970026.125	639886.903
N 60° 39' 01.8" E	599.987	970320.200	640409.880
N 60° 39' 01.8" E	599.987	970614.276	640932.856
N 60° 39' 01.8" E	599.987	970908.351	641455.833
N 60° 39' 01.8" E	339.095	971074.553	641751.404
N 60° 39' 01.8" E	260.895	971202.427	641978.811
N 60° 39' 01.8" E	599.987	971496.502	642501.788
N 60° 39' 01.8" E	599.987	971790.578	643024.765
N 60° 39' 01.8" E	599.987	972084.653	643547.741
N 60° 39' 01.8" E	406.499	972283.893	643902.065
S 29° 24' 19.8" E	150.405	972152.864	643975.912
N 60° 38' 20.8" E	399.986	972348.981	644324.519
N 60° 38' 20.8" E	393.702	972542.017	644667.450
N 60° 38' 20.8" E	599.987	972836.196	645190.568
N 60° 38' 20.8" E	599.987	973130.375	645713.486
N 60° 38' 20.8" E	405.931	973329.407	646047.275
N 29° 28' 47.9" W	149.931	973459.926	645993.491
N 60° 39' 01.8" E	194.036	973555.030	646162.622



PIAT Book 10 page 84  
ARTHUR W. STEINMAN & ASSOCIATES, INC.  
Professional land surveyors

DEPARTMENT OF THE ARMY  
JACKSONVILLE DISTRICT, CORPS OF ENGINEERS  
JACKSONVILLE, FLORIDA

OKEECHOBEE WATERWAY, FLORIDA  
ST. LUCIE CANAL PORTION  
Survey for  
Location of Rights-of-Way

MARTIN COUNTY, FLORIDA

DWN BY: JFC	INV. NO. DAC:	SIZE:	DWG. NO.:
CKD BY: JWC	DATED:	SCALE: 1" = 400'	DATED: 12-14-85
SHEET 2 OF 53		DO FILE NO 120B-34,724	